

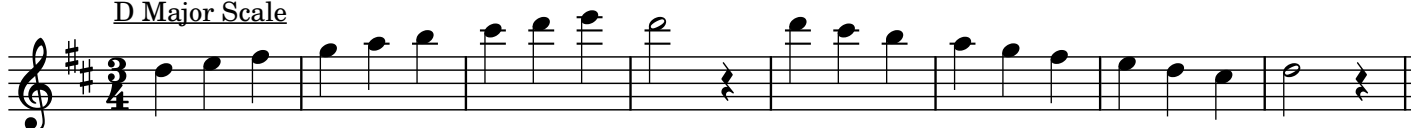
1-0.4 Scale Patterns in D Major (w/ high E)

The **KEY SIGNATURE** appears just after the treble clef at the beginning of each line of music and tells us which sharps (#) and flats (b) to play throughout.

The key signature on this page shows two sharps: one on the "F" line and one on the "C" space.

This means that every "F" and every "C" on this page must be played as "F#" and "C#."

D Major Scale



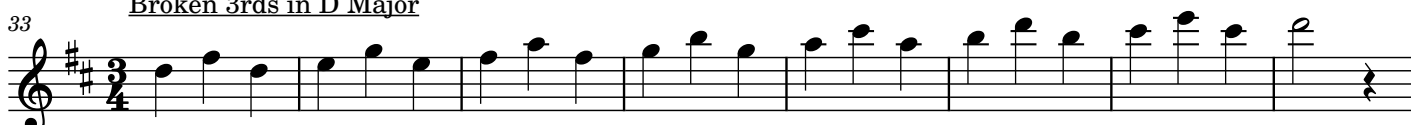
D Major Arpeggio



Step-wise 3rds in D Major



Broken 3rds in D Major



Menuet by JS Bach

