

Blues By Five

Miles Davis solo (for Bb instruments)

Miles Davis

Head

Musical notation for the Head section, consisting of three staves of music in 4/4 time. The first staff begins with a treble clef and a key signature of two flats (Bb and Eb). The melody features eighth and quarter notes with accents. The second staff continues the melody with similar rhythmic patterns. The third staff concludes the head with a double bar line and repeat dots.

1st Solo Chorus

Musical notation for the 1st Solo Chorus, consisting of three staves of music. The first staff starts with a treble clef and a key signature of two flats. It features a sequence of quarter notes and eighth notes with accents. The second staff continues with eighth-note runs and quarter notes. The third staff concludes the chorus with a double bar line.

2nd Solo Chorus

Musical notation for the 2nd Solo Chorus, consisting of three staves of music. The first staff begins with a treble clef and a key signature of two flats. It features a sequence of quarter notes and eighth notes with accents. The second staff continues with eighth-note runs and quarter notes. The third staff concludes the chorus with a double bar line.

3rd Solo Chorus

Musical staff for the 3rd Solo Chorus, measure 37. The staff is in treble clef with a key signature of one flat (Bb) and a 7/8 time signature. The melody consists of eighth and quarter notes, ending with a quarter rest and a fermata over the final note.

Musical staff for the 3rd Solo Chorus, measure 41. The staff is in treble clef with a key signature of one flat (Bb) and a 7/8 time signature. The melody consists of eighth and quarter notes, ending with a quarter rest and a fermata over the final note.

Musical staff for the 3rd Solo Chorus, measure 45. The staff is in treble clef with a key signature of one flat (Bb) and a 7/8 time signature. The melody consists of eighth and quarter notes, ending with a quarter rest and a fermata over the final note.

4th Solo Chorus

Musical staff for the 4th Solo Chorus, measure 49. The staff is in treble clef with a key signature of one flat (Bb) and a 7/8 time signature. The melody features a sharp sign (accidental) and a fermata over the final note.

Musical staff for the 4th Solo Chorus, measure 53. The staff is in treble clef with a key signature of one flat (Bb) and a 7/8 time signature. The melody features a sharp sign (accidental) and a fermata over the final note.

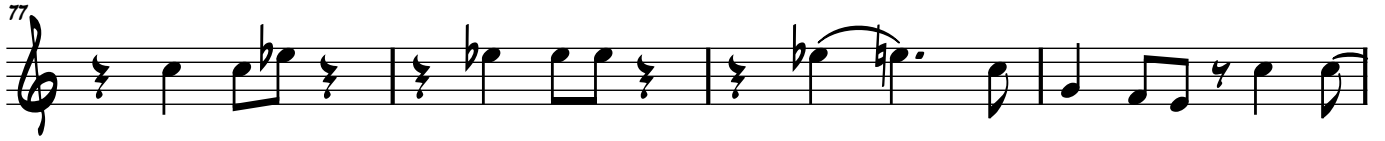
Musical staff for the 4th Solo Chorus, measure 57. The staff is in treble clef with a key signature of one flat (Bb) and a 7/8 time signature. The melody consists of eighth and quarter notes, ending with a quarter rest and a fermata over the final note.

5th Solo Chorus

Musical staff for the 5th Solo Chorus, measure 61. The staff is in treble clef with a key signature of one flat (Bb) and a 7/8 time signature. The melody consists of eighth and quarter notes, ending with a quarter rest and a fermata over the final note.

Musical staff for the 5th Solo Chorus, measure 65. The staff is in treble clef with a key signature of one flat (Bb) and a 7/8 time signature. The melody consists of eighth and quarter notes, ending with a quarter rest and a fermata over the final note.

Musical staff for the 5th Solo Chorus, measure 69. The staff is in treble clef with a key signature of one flat (Bb) and a 7/8 time signature. The melody consists of eighth and quarter notes, ending with a quarter rest and a fermata over the final note.

6th Solo Chorus7th Solo Chorus8th Solo Chorus